

The logo for Waydo, featuring the word "WAYDO" in a stylized, italicized, sans-serif font. The "W" is blue, and the "AYDO" is white. The background of the entire image is a man in a blue tank top and black shorts standing on a hydrofoil board, gliding over a body of water with houses and palm trees in the background.

# WAYDO

**WHAT WAVES DO,  
WE DO BETTER.**

Feel the sensation of flying above water.

**EXPLORE NOW**



"Once you get the motor going,  
it's basically like

**riding on  
a flying surfboard."**



**Justin Jaffe**

Senior editor at **CNET**







Max Speed  
22mph

Max Range  
18.6mi

Max Duration  
85 mins

Warranty  
2-year



Max Speed  
22mph

Max Range  
18.6mi

Max Duration  
85 mins

Warranty  
2-year



**EASY TO USE.  
FUN FOR ALL LEVELS.**

**OUR STORY**







## **BOARD**

### **BEGINNER FRIENDLY**

We designed and crafted two versions of boards. Both of them are perfect for eFoiling, thanks to their large 110L volume, and a width that allows for an easy water-start.

FLYER ONE boards come in a user-friendly design that makes gliding on water more efficient, while providing adequate stability so that any new rider feels confident during their initial ride.



**POWER ASSEMBLY**  
**ELECTRIC MOTOR**  
**FOR MORE SAFETY**  
**AND LESS LAG**

Powered by a robust propulsion system, Waydoo Flyer ONE can soar at an incredible speed of 22 mph for up to 85 minutes per charge. An electric motor delivers instant response on-demand with no lag, allowing you to explore without limits even when there's no waves and wind.







## WINGS

### PREPREG CARBON CONSTRUCTION

We are offering two types of front wings. Both of them are finely tuned to suit beginners and skilled eFoilers. The Explorer wing has a larger wing area so the wing load is smaller, allowing you to take off easily at a lower speed while providing good stability. The Patroller wing has a smaller wing area, making it ideal for advanced riders who are seeking a more aggressive ride style.



# WIRELESS CONTROL. ENDLESS FREEDOM.

The Jet One Controller is designed with an LCD interface and feels good in your hand. It displays Bluetooth connection status, battery status and ride speed. Simply use the trigger button and "+" or "-" buttons to accelerate or slow down your eFoil. Alongside its IP68 rating, the controller also comes with a rechargeable lithium-ion battery lasting up to 10 hours with a single charge.



IP68 Waterproof



Unsinkable



Bluetooth Connection



GPS Tracking





# SEALED BATTERY. PLUG-IN & GO.

The PowerFlight Cell Lithium-ion battery is a proprietary product designed and built by Waydoo. It is designed to handle rugged marine environments. Both rechargeable and replaceable, it comes with two-step installation procedure that allows easy plug-and-play. This intelligent battery features an IP68 waterproof rating, making it tough and resilient during operation. Equipped with a smart Battery Management System (BMS), it offers comprehensive protection against overheating, overcurrent, excess voltage and short-circuit.









## EPP EDITION

### Size (L x W x H)

65.8 x 28.7 x 6.3 inches / 167 x 73 x 16.2 cm

### Material

EPP foam reinforced with an aluminium alloy frame

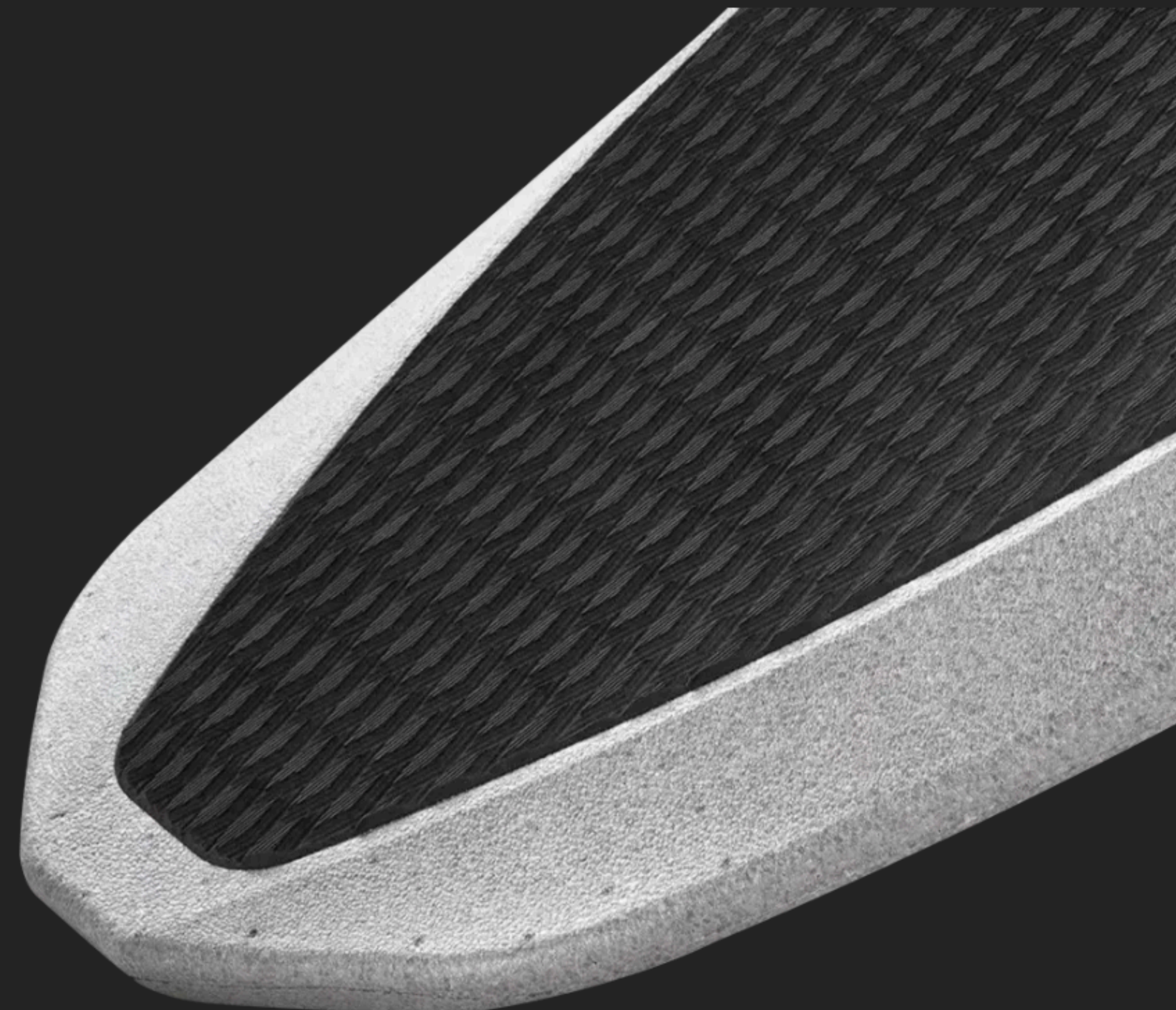
### Weight

27.8lbs / 12.6kg

### Volume

110L

**THB 249,500**





## CARBON EDITION

### Size (L x W x H)

66 x 28.3 x 6.3 inches / 168 x 74 x 17 cm

### Material

Carbon fiber composite

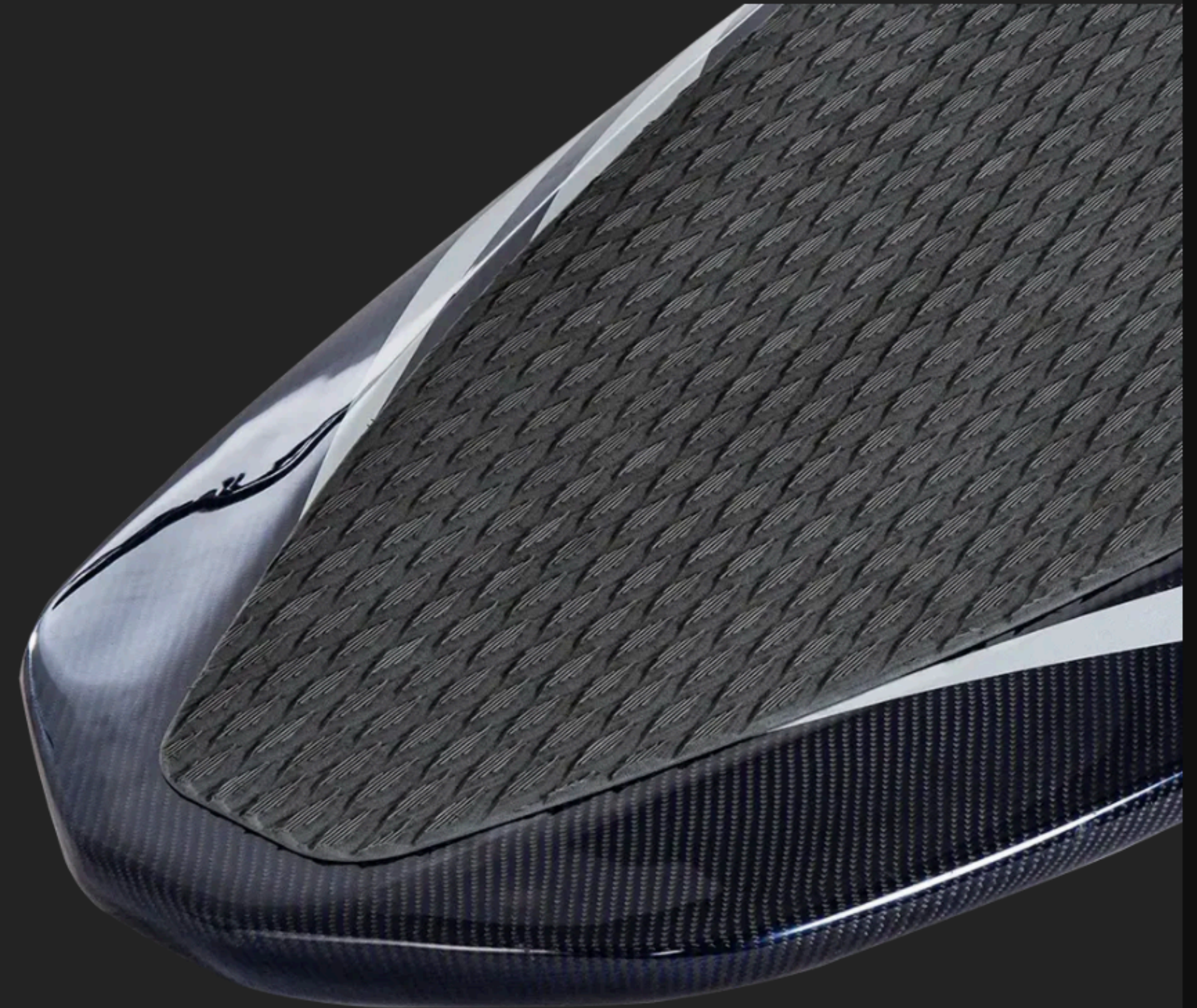
### Weight

30.2lbs / 13.7kg

### Volume

110L

**THB 299,500**







# Official Waydoo Thailand Distributor

**Contact:**  
**Zanook eFoil**  
**Tel: +662-104-9053**  
**FB: Zanook eFoil**  
**Line ID: @ZanookWakePark**  
**Email: [info@zanook.com](mailto:info@zanook.com)**